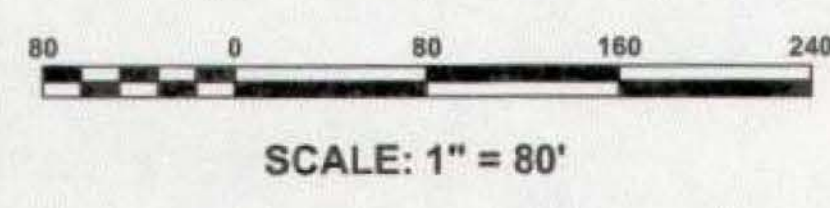


E:\SCE\ Lambertville\10130 Sewer Rehabilitation\Sheets\10130.021 07-10 Traffic Detour Plans.dwg Fri, Mar 29, 2019 - 2:06pm jowler SUBURBAN CONSULTING ENGINEERS, INC.



NORTH UNION STREET TRAFFIC DETOUR PLAN II
SCALE: 1" = 80'



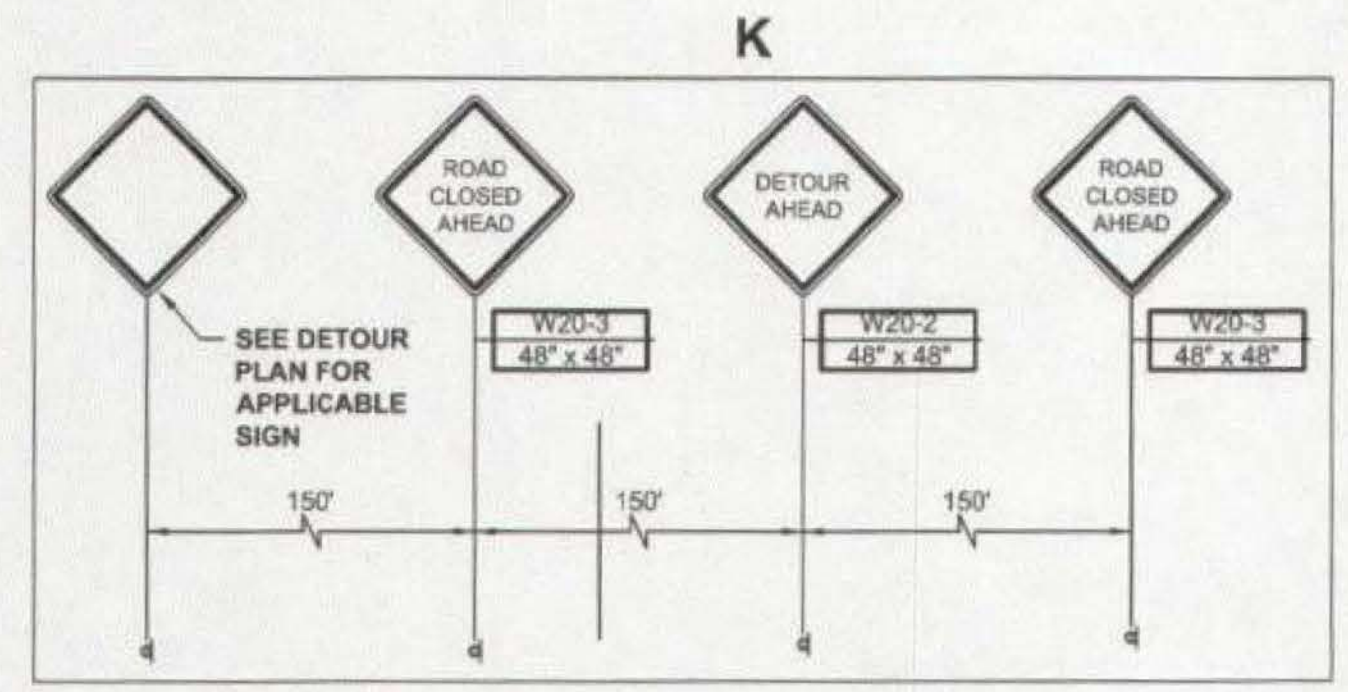
SIGN LEGEND

A	B	C	D
DETOUR M4-8 30" X 15" BLK/ORG	DETOUR M4-8 30" X 15" BLK/ORG	DETOUR M4-8 30" X 15" BLK/ORG	DETOUR M4-8 30" X 15" BLK/ORG
NORTH M3-1 36" X 18" BLK/WHITE	NORTH M3-1 36" X 18" BLK/WHITE	NORTH M3-1 36" X 18" BLK/WHITE	NORTH M3-1 36" X 18" BLK/WHITE
→ M6-1(R) 21" X 15" BLK/ORG	← M6-1(L) 21" X 15" BLK/ORG	↑ M6-3 21" X 15" BLK/ORG	END DETOUR M4-8a 21" X 15" BLK/ORG
E	F	G	H
DETOUR M4-8 30" X 15" BLK/ORG	DETOUR M4-8 30" X 15" BLK/ORG	DETOUR M4-8 30" X 15" BLK/ORG	DETOUR M4-8 30" X 15" BLK/ORG
SOUTH M3-1 36" X 18" BLK/WHITE	SOUTH M3-1 36" X 18" BLK/WHITE	SOUTH M3-1 36" X 18" BLK/WHITE	SOUTH M3-1 36" X 18" BLK/WHITE
→ M6-1(R) 21" X 15" BLK/ORG	← M6-1(L) 21" X 15" BLK/ORG	↑ M6-3 21" X 15" BLK/ORG	END DETOUR M4-8a 21" X 15" BLK/ORG
I	J		
R11-3 60"x30" ROAD CLOSED	R11-3 60"x30" ROAD CLOSED LOCAL TRAFFIC ONLY		

TRAFFIC CONTROL LEGEND

- POST WITH MOUNTED SIGN
- TYPE III BREAKAWAY BARRICADE WITH SIGN
- TRAFFIC DRUMS
- WORK ZONE
- SOUTH BOUND NORTH UNION STREET TRAFFIC DETOUR
- NORTH BOUND NORTH UNION STREET TRAFFIC DETOUR
- DIRECTION OF ONE-WAY TRAFFIC

NOTE:
1. ALL INSTALLATION PROCEDURES FOR TRAFFIC CONTROL SHALL CONFORM WITH ANY AND ALL NJDOT REQUIREMENTS AND COUNTY REQUIREMENTS.
2. NJDOT APPROVED MOUNTED LIGHTS SHALL BE MOUNTED ON THE SIGNS DURING NIGHT WORK.



NOTICE
THIS DRAWING AND ALL INFORMATION CONTAINED HEREIN IS AUTHORIZED FOR USE ONLY BY THE PARTY FOR WHOM THE WORK WAS CONTRACTED OR TO WHOM IT IS CERTIFIED.
THIS DRAWING MAY NOT BE COPIED, REPRODUCED, DISTRIBUTED, OR BELIEVED FOR ANY OTHER PURPOSE WITHOUT THE WRITTEN CONSENT OF SUBURBAN CONSULTING ENGINEERS, INC.
FOR E.I.C. ELECTRONIC SUBMISSIONS NOT CONTAINING A VALID DIGITAL SEAL OR PAPER COPIES NOT CONTAINING A RAISED SEAL ARE NOT ORIGINALS AND MAY HAVE BEEN ALTERED.
© COPYRIGHT 2019 SUBURBAN CONSULTING ENGINEERS, INC. ALL RIGHTS RESERVED.

DESCRIPTION	NO.	DATE	BY	CHK.
REVISIONS				

DRAWN BY:
JMF
03/29/2019
CHECKED BY:
MKM
03/29/2019
CHECKED BY:

ANDREW S. HOLT, PE
NJ PROFESSIONAL ENGINEER
LICENSE NO. 24060385400

DATE: 03/29/2019

SC SUBURBAN CONSULTING ENGINEERS, INC.
COA NO: 2812007350
Civil Engineers - Municipal Engineers - Planners - Environmentalists - Land Surveyors - Landscape Architects - Planters - Environmentalists - Land Surveyors
98 US Highway 206, Suite 101 2430 Highway 54, Bldg. A Suite 18
Hamburg, NJ 07836 973.399.1776 Wall, NJ 08736 732.282.1776
EXCELLENCE • ECONOMY • ENVIRONMENT

LAMBERTVILLE MUNICIPAL UTILITIES AUTHORITY 2019 SANITARY SEWER COLLECTION SYSTEM REHABILITATION CITY OF LAMBERTVILLE, COUNTY OF HUNTERDON, STATE OF NEW JERSEY	PROJECT NUMBER: SCE-10130.021
NORTH UNION STREET TRAFFIC DETOUR PLAN II	SCALE: 1" = 80'
	SHEET 8 OF 12
	REVISION