



NOTICE OF UPCOMING VEGETATION MANAGEMENT WORK

To the Local Municipality,

Public Service Electric and Gas Company (PSE&G) maintains one or more electric transmission rights-of-way through your municipality. The electric transmission lines on PSE&G rights-of-way are essential for PSE&G to meet its commitment to provide safe, reliable and efficient electric service to consumers throughout New Jersey. Maintaining the vegetation along these transmission lines for proper tree clearance is absolutely necessary to assure:

- The continued safety of homeowners living near the transmission lines.
- The safety of PSE&G employees and contractors working on the power lines.
- The reliability of the electric utility system.

Maintenance of vegetation on rights-of-way in your municipality is required at this time; please see highlighted areas on the attached map(s). A list of the nearest cross streets has also been provided. Private contractors working for PSE&G will remove incompatible trees within the easement and trim branches originating from outside that hang over or cross onto PSE&G's easement along the electric transmission right-of-way. This work will begin on/after January 1, 2019 and will continue throughout 2019. A contractor representative will notify your municipality and the effected property owners in your community closer to the actual date that crews will be performing the work in your area.

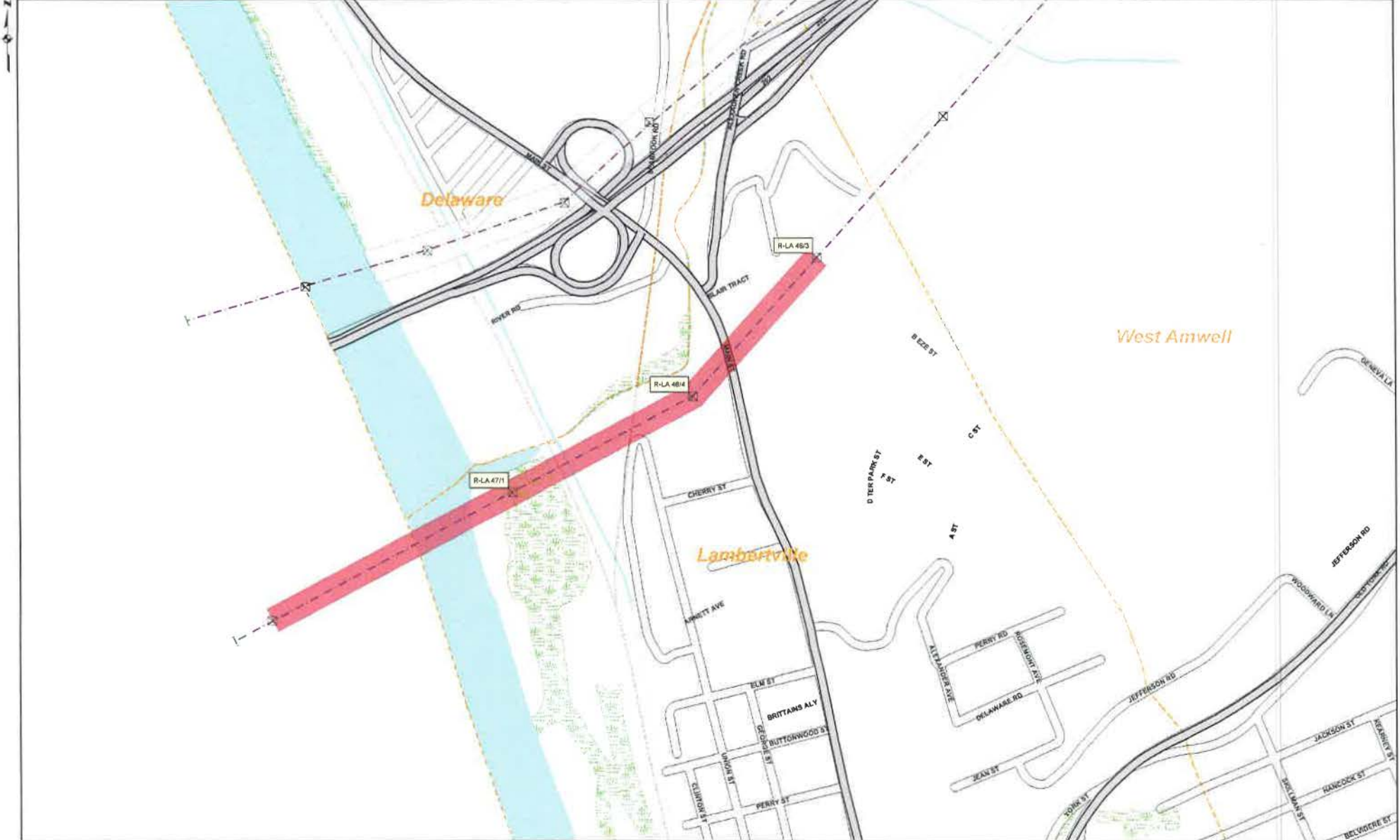
If you have any questions or concerns, please telephone Public Service Electric & Gas Transmission Vegetation Management Department at 732-289-5292.

Thank you,

Richard Arnold
PSE&G Vegetation Manager - Transmission

Lambertville City

<u>ROW Name</u>	<u>Structure ID</u>	<u>Cross Street</u>
ROSELAND - LAMBERTVILLE	R-LA 46/2-46/3	Route 29
ROSELAND - LAMBERTVILLE	R-LA 46/3-46/4	Route 29
ROSELAND - LAMBERTVILLE	R-LA 46/4-47/1	North Union St
ROSELAND - LAMBERTVILLE	R-LA 47/1	North Union St



Plot Date: 8/3/2010	Plotted By: CMWFL	Transmission	PUBLIC SERVICE ELECTRIC & GAS COMPANY Transmission Systems -- Vegetation Management Geographic Information System	Project: Lambertville City Transmission	Sheet Number: 1
Scale: 1" equals 500'	Plotted For: Vegetation Management				

N.J.A.C. 14:5-9.1

NEW JERSEY ADMINISTRATIVE CODE
Copyright (c) 2016 by the New Jersey Office of Administrative Law

*** This file includes all Regulations adopted and published through the ***
*** New Jersey Register, Vol. 48, No. 1, January 4, 2016 ***

TITLE 14. PUBLIC UTILITIES
CHAPTER 5. ELECTRIC SERVICE
SUBCHAPTER 9. ELECTRIC UTILITY LINE VEGETATION MANAGEMENT

N.J.A.C. 14:5-9.1 (2016)

§ 14:5-9.1 Purpose and scope

This subchapter sets forth requirements that EDCs shall follow in managing vegetation in proximity to an energized conductor in order to ensure public safety and the efficient and reliable supply of electric power using integrated vegetation management and sound arboricultural practices.

HISTORY:

Recodified from N.J.A.C. 14:5-8.1 and amended by R.2008 d.57, effective March 17, 2008.

See: 39 N.J.R. 3716(a), 40 N.J.R. 1684(a).

Substituted "EDCs" for "electric public utilities".

Amended by R.2015 d.138, effective August 17, 2015.

See: 47 N.J.R. 631(a), 47 N.J.R. 2165(c).

Inserted "using integrated vegetation management and sound arboricultural practices".

§ 14:5-9.2 (Reserved)

§ 14:5-9.3 General provisions

(a) An EDC shall ensure that vegetation management is conducted in accordance with this subchapter on any energized conductors of 600 volts and higher, whether for distribution or transmission, that the electric public utility owns, in whole or in part.

(b) Each EDC shall obtain, and shall ensure that its contractors obtain, all required permits and licenses prior to commencement of vegetation management.

(c) An EDC that utilizes chemical or biological agents in vegetation management shall comply with any laws or regulations governing the use of those biological and chemical agents.

(d) Each EDC shall employ a vegetation manager, who is an electric utility arborist. The VM shall be a

utility employee, not a contractor. The electric public utility shall provide the VM with the authority and the resources to administer all aspects of the utility's vegetation management program, and the VM shall ensure that the electric public utility complies with this subchapter. The VM's name and contact information shall be posted on the electric utility's website and shall be included on all notifications provided pursuant to the notice requirements of N.J.A.C. 14:5-9.10.

(e) Each EDC shall ensure that all contractors hired to perform vegetation management inform their workers of all applicable Federal and State laws, rules or regulations that apply to the work performed under this subchapter. The EDC shall also ensure that all contractors comply with each applicable requirement of this subchapter and all other applicable law.

(f) In addition to the vegetation management work required under this subchapter, an EDC, at the sole discretion of the EDC's VM, may perform additional vegetation management work, on the EDC's distribution system, which is requested to meet the aesthetic desires of a municipality or a private property owner and which is brought to the attention of the EDC's VM before the EDC's vegetation management commences in a municipality or on a private property owner's property, provided that the additional work requested will not impair the EDC's ability to meet the reliability and safety objectives of this subchapter, negatively impact the EDC's schedule of vegetation management work, or require incremental costs. An EDC that performs vegetation management on the EDC's distribution system at the request of a municipality, government agency, or private property owner, other than the vegetation management work required under this subchapter, may require the requesting party to pay any incremental cost above the EDC's cost to perform the vegetation management required by this subchapter. This subsection shall not apply to transmission line vegetation management required under N.J.A.C. 14:5-9.7.

(g) Upon a written request from a municipality, an EDC may, but is not required to, temporarily suspend compliance with one or more of the vegetation management requirements of this subchapter, within the following limits:

1. The suspension of compliance shall apply only to the distribution system, and shall not apply to transmission line vegetation management required under N.J.A.C. 14:5-9.7;
2. The suspension of compliance shall apply only to those portions of a distribution system that are located within the municipality, and that do not affect service to any adjacent municipality;
3. The EDC shall not suspend compliance with any requirement if the suspension would result in danger to the public; and
4. If the suspension results in additional costs to the EDC due to lack of tree trimming or other vegetation management, the municipality shall reimburse the EDC for additional costs.

(h) An EDC may petition the Board for recovery of the distribution and transmission portion of vegetation management program costs required under this subchapter in future base rate proceedings.

(i) Each EDC shall perform vegetation management on a pro rata basis over the four-year cycle identified in N.J.A.C. 14:5-9.4(b).

HISTORY:

Recodified from N.J.A.C. 14:5-8.3 and amended by R.2008 d.57, effective March 17, 2008.

See: 39 N.J.R. 3716(a), 40 N.J.R. 1684(a).

Substituted "EDC" for "electric public utility" throughout; in (d), deleted "(VM)" following "vegetation manager" and updated the N.J.A.C. references; in (e), substituted "and State" for ", State; county, and municipal" and substituted the second occurrence of "EDC" for "electric utility"; in (f), inserted "incremental" and substituted "EDC's" for "electric public utility's"; in (g)1, inserted "transmission line" and "required", and substituted "N.J.A.C. 14:5-9.6" for "transmission lines"; in (g)4, inserted "or other vegetation management"; and rewrote (i).

Amended by R.2015 d.138, effective August 17, 2015.

See: 47 N.J.R. 631(a), 47 N.J.R. 2165(c).

In (d), deleted ", as defined at N.J.A.C. 14:5-9.2" following "arborist", and substituted "website" for "web site"; in (d) and (g)1, updated the N.J.A.C. reference; rewrote (f); in (g)4, substituted the second occurrence of "EDC" for "electric public utility" and "additional" for "these"; and in (i), deleted "to achieve full compliance by December 18, 2010" following the N.J.A.C. reference.

§ 14:5-9.4 Maintenance cycle

(a) An EDC shall perform an annual visual inspection of all energized conductors that are associated with a transmission line, to determine whether vegetation management is needed. The visual inspection may be performed from the ground except in cases where the conductor is not visible from the ground. The EDC shall take into account the height of the vegetation and the distance of the vegetation from the energized conductor, in determining whether vegetation management is needed.

(b) An EDC shall perform vegetation management on vegetation that is close enough to pose a threat to its energized conductors at least once every four years.

(c) In addition to the maintenance required in (b) above, if an EDC becomes aware of any vegetation, including hazard trees, close enough to its energized conductors to affect reliability or safety prior to the next required vegetation management activity the electric utility shall ensure that necessary vegetation management is promptly performed as required under N.J.A.C. 14:5-9.6 and 9.7 or 9.8, as applicable.

(d) If the EDC determines that vegetation described under (c) above poses an immediate safety hazard, the EDC shall not be subject to the notice requirements at N.J.A.C. 14:5-9.10. However, the EDC shall, to the extent practicable, make a reasonable effort to notify the customers and property owners described at N.J.A.C. 14:5-9.10(b)1 and 2 prior to performing the vegetation management.

HISTORY:

Recodified from N.J.A.C. 14:5-8.4 and amended by R.2008 d.57, effective March 17, 2008.

See: 39 N.J.R. 3716(a), 40 N.J.R. 1684(a).

Substituted "EDC" for "electric public utility" throughout; in (a), inserted "that are associated with a transmission line"; rewrote (c); and added (d).

Amended by R.2015 d.138, effective August 17, 2015.

See: 47 N.J.R. 631(a), 47 N.J.R. 2165(c).

Rewrote (c); and in (d), updated the N.J.A.C. references.

§ 14:5-9.5 Hazard trees

(a) If the EDC's VM determines that a tree meets the definition of a hazard tree, the EDC shall determine if it is permitted (for example, by easement, tariff, or law) to remove or mitigate the hazard tree. If the EDC determines that it is not permitted to remove or mitigate the hazard tree, the EDC shall attempt to obtain permission to remove or mitigate the hazard tree.

(b) If permission is granted or it is determined that permission is not necessary under (a) above, the EDC shall arrange to remove or mitigate the hazard tree as part of the scheduled vegetation management work to be performed during the current year, unless the VM determines that the condition of the hazard tree poses an imminent risk of failure, in which case, the EDC shall remove or mitigate the hazard tree as soon as practicable.

(c) The EDC is required to comply with the recording and reporting requirements of this subchapter as set forth at N.J.A.C. 14:5-9.9(d)2.

HISTORY:

New Rule, R.2015 d.138, effective August 17, 2015.

See: 47 N.J.R. 631(a), 47 N.J.R. 2165(c).

Former N.J.A.C. 14:5-9.5, Technical standards for vegetation management, recodified to N.J.A.C. 14:5-9.6.

§ 14:5-9.6 Technical standards for vegetation management

(a) Each EDC shall ensure that vegetation management conducted on its energized conductors is performed in accordance with the standards and accepted procedures set forth in the following publications, which are incorporated herein by reference, as amended and supplemented:

1. Part 1 of the document entitled Tree, Shrub, and Other Woody Plant Maintenance-Standard Practices (Pruning). This document, also known as ANSI A300, is published by the American National Standards Institute, and may be obtained at www.ansi.org;
2. Part 7 of the document entitled for Tree Care Operations-Tree, Shrub, and Other Woody Plant Maintenance - Standard Practices (Integrated Vegetation Management A. Utility Rights-Of-Way). This document, also known as ANSI A300, is published by the American National Standards Institute, and may be obtained at www.ansi.org;
3. Part 9 of the document entitled for Tree Care Operations - Tree, Shrub, and Other Woody Plant Maintenance - Standard Practices (Tree Risk Assessment). This document, also known as ANSI A300, is published by the American National Standards Institute, and may be obtained at www.ansi.org;
4. Best Management Practices, Utility Pruning of Trees, 2004. This title is published by the International

Society of Arboriculture and may be obtained at
<http://www.isa-arbor.com/store/product.aspx?ProductID=65>;

5. Pruning, Trimming, Repairing, Maintaining, and Removing Trees, and Cutting Brush--Safety Requirements, 2012. This document, also known as ANSI Z133.1, is published by the American National Standards Institute, and may be obtained at www.ansi.org;

6. Native Trees, Shrubs And Vines For Urban And Rural America: A Planting Design Manual for Environmental Designers, by Hightshoe, G.L., 1987, is published by John Wiley and Sons and may be obtained from various resellers;

7. Manual of woody landscape plants 5th Ed., by Michael A. Dirr. Stipes Publishing, LLC; 5th edition (August, 1998), and may be obtained from various resellers;

8. Hortus Third: A concise dictionary of plants cultivated in the United States and Canada, by L.H. Bailey Hortorium, 1976, and may be obtained from various resellers; and

9. National Electric Safety Code C2-2012. ISBN: 9780738165882 is published by the Institute of Electrical and Electronics Engineers, Inc., and may be purchased at www.ieee.org.

(b) Where multiple standards or methods listed at (a) above would apply or conflict, the VM or his or her designee shall select the most appropriate standard or method under the circumstances.

(c) Each EDC shall develop its own vegetation management standards and guidelines, which shall be consistent with this subchapter. In developing these standards and guidelines, an EDC shall prioritize work based upon:

1. The extent of the potential for vegetation to interfere with the energized conductor;
2. The voltage of the affected energized conductor;
3. The relative importance of the affected energized conductor in maintaining safety and reliability; and
4. The presence and condition of any hazard trees.

(d) Each EDC shall provide a copy of its vegetation management standards and guidelines to the Board as a chapter in the Annual System Performance Report. If an EDC makes a change in its vegetation management standards and guidelines, the utility shall provide Board staff with a copy of the change no later than 30 days prior to implementing the change.

(e) Each EDC's vegetation management standards and guidelines shall cover, at a minimum, all of the following activities:

1. Tree pruning and removal;
2. The procedures for handling the removal of hazard trees;
3. Vegetation control around poles, substations, and other energized conductors;

4. Manual, mechanical, or chemical control of vegetation along rights of way;
5. Inspection of vegetation management both before and after the work is performed;
6. Research and development of improved vegetation management activities and practices; and
7. Public education.

(f) Among the factors the EDC shall consider in determining the extent of vegetation management to be performed at a particular site are:

1. The rate at which each species of vegetation is likely to grow back;
2. The voltage of the energized conductor, with higher voltages requiring larger clearances;
3. The potential movement of the energized conductor during various weather conditions;
4. The potential movement of trees or other vegetation during various weather conditions; and
5. The utility's legal rights to access the area.

(g) The EDC shall remove all trimmings and cut vegetation resulting from vegetation management activities that are part of the utility's regular maintenance cycle, within five business days after the vegetation was cut, except if the EDC obtains consent to leave the trimmings or cut vegetation, from the owner of the property upon which the trimmings or cut vegetation are located.

HISTORY:

Recodified from N.J.A.C. 14:5-8.5 and amended by R.2008 d.57, effective March 17, 2008.

See: 39 N.J.R. 3716(a), 40 N.J.R. 1684(a).

Substituted "EDC" for "electric public utility" throughout; in (a)9, substituted "C2-2007" for "C2-2002" and "07" for "02"; in (d), substituted "its" for "their" following "provide a copy of" and "as a chapter in the Annual System Performance Report" for "by January 17, 2007"; in (f), substituted "EDC" for "electric utility"; and rewrote (g).

Recodified from N.J.A.C. 14:5-9.5 and amended by R.2015 d.138, effective August 17, 2015.

See: 47 N.J.R. 631(a), 47 N.J.R. 2165(c).

Rewrote the section. Former N.J.A.C. 14:5-9.6, Transmission line vegetation management, recodified to N.J.A.C. 14:5-9.7.

§ 14:5-9.7 Transmission line vegetation management

(a) In addition to the other requirements of this subchapter, transmission lines, as defined at N.J.A.C. 14:5-1.2, are subject to the requirements in this section.

(b) At a minimum, each EDC shall meet the requirements for minimum clearances between any

transmission line and the closest vegetation, which are set forth in the North American Electric Reliability Corporation (NERC) FAC-003-3, which is incorporated herein by reference, as amended and supplemented and available at www.nerc.com.

(c) Except as provided at (f) below, the following shall apply in the wire zone:

1. An EDC shall allow woody plants that are agricultural crops that naturally mature at 12 feet or less;
2. Other than as provided at (c)1 above, the EDC shall not allow woody plants that mature above three feet tall to grow in the wire zone, and the preferred growth shall be grasses or a low-growing, compatible, scrub-shrub plant community to obtain a meadow effect where possible.

(d) Except as provided at (f) below, the EDC shall apply integrated vegetation management (IVM) in the border zone. IVM is a best management practice conveyed in the American National Standard for Tree Care Operations, Part 7 (ANSI 2006) and the International Society of Arboriculture's Best Management Practices: Integrated Vegetation Management (Miller 2007).

(e) In addition to meeting the other requirements in this section, each EDC shall ensure that the following requirements for transmission lines are met, except for those instances set forth in (f) below:

1. Clearing under transmission lines shall be wide enough within the EDC's right of way so that no vegetation or parts of vegetation will grow or fall into the transmission lines;
2. Only grass vegetation shall be permitted to grow within three feet of any structure;
3. Where an EDC has cleared a right of way of vegetation and bare soil is exposed, the EDC shall comply with the soil erosion requirements of the applicable soil conservation district in order to prevent soil erosion. A list of the soil conservation districts in New Jersey may be found at www.state.nj.us/agriculture/divisions/anr/nrc/conservdistricts.html;
4. To the extent that any plant species identified as invasive and non-indigenous to New Jersey poses a threat to the maintenance of the right of way or a hazard to electrical transmission conductors, the EDC shall not plant that species in the right of way, and shall make reasonable efforts to actively eliminate from the entire right of way the species identified as invasive and non-indigenous, see Snyder, David and Sylvan R. Kaufman, 2004. An overview of non-indigenous plant species in New Jersey. New Jersey Department of Environmental Protection, Division of Parks and Forestry, Office of Natural Lands Management, Natural Heritage Program, Trenton, NJ (available at <http://www.nj.gov/dep/parksandforests/natural/heritage/InvasiveReport.pdf>, and incorporated by reference herein, including any supplements and amendments thereto). To do so, the EDC shall use the best integrated vegetation management practices available and practical; and
5. Each year in the March billing cycle, or two months prior to the commencement of vegetation management work on a particular property, whichever is earlier, each EDC shall advise customers of the requirements in this subsection, through a direct notification.

(f) Notwithstanding (d) and (e) above, an EDC may leave trees and other woody vegetation within the transmission right of way under any of the following conditions:

1. The right-of-way document, easement, indenture, deed or other written land rights, executed before Jan 1, 2007, expressly permit vegetation to be located within the transmission right of way;
2. The slope of the topography exceeds 30 degrees and the transmission right of way is such that the tree or other vegetation at mature height will allow a space of more than 150 percent of the clearance requirements for an electrical path to ground, as set forth in the National Electric Safety Code, § 232 to § 235; or
3. Trees are located within an inactive transmission corridor and at mature height will allow a space of more than 150 percent of the clearance requirements for an electrical path to ground set forth in the National Electric Safety Code, § 232 to § 235.

(g) For the purposes of this section, the mature height of all vegetation, including agricultural crops, shall be determined in accordance with the publications listed in N.J.A.C. 14:5-9.6(a), or equivalent publications. Each EDC shall provide lists of acceptable species on its website or in a publication provided free of charge upon request by a ratepayer.

(h) Each year, by May 31, the EDC shall develop a schedule for transmission line vegetation management, which shall be included in the EDC's annual system performance report as required by N.J.A.C. 14:5-8.8. The schedule shall:

1. List the transmission lines planned for vegetation management for the next four years in advance (one of the four-year cycles required at N.J.A.C. 14:5-9.4(b));
2. Ensure that vegetation management on transmission lines is performed prior to vegetation becoming a threat to safety or service reliability; and
3. List the municipalities and the year when vegetation management work is anticipated to be done in each municipality.

(i) The EDC shall post the transmission line vegetation management schedule required under (h) above on its website and distribute it to affected municipalities and public authorities in accordance with N.J.A.C. 14:5-9.10.

HISTORY:

Recodified from N.J.A.C. 14:5-8.6 and amended by R.2008 d.57, effective March 17, 2008.

See: 39 N.J.R. 3716(a), 40 N.J.R. 1684(a).

Substituted "EDC" for "electric public utility" throughout; in (a), updated the N.J.A.C. reference; in (b) and (c), substituted "(C2-2007)" for "(C-2 2002)"; in the introductory paragraph of (e), inserted ", except for those instances set forth in (f) below"; in (e)1, inserted "within the EDC's right of way"; in (e)2, deleted "that grows" following "vegetation"; rewrote (e)3; in (e)4, updated the N.J.A.C. reference and inserted the last sentence; in (e)7, substituted the second occurrence of "EDC" for "utility" and updated the URL; in (e)8, rewrote the first sentence; in (e)9, substituted "advise customers" for "owners of land upon which the utility holds a right of way" and "direct notification" for "separate direct mailing"; added new (f); recodified the second (e) as (g); recodified former (f) as (h); and in (g), the introductory paragraph of (h) and (h)1, updated the N.J.A.C. references.

Amended by R.2010 d.018, effective January 19, 2010.

See: 41 N.J.R. 2084(a), 41 N.J.R. 2633(a), 42 N.J.R. 508(a).

Rewrote (b), (c), (d), (g) and (h)3; deleted former (e)2 through (e)5; recodified former (e)6 through (e)9 as (e)2 through (e)5; in (e)4, inserted "not plant that species in the right of way, and shall", in the introductory paragraph of (f), inserted "(d) and"; in the introductory paragraph of (h), substituted "by May 31" for "before June 1"; and added (i).

Recodified from N.J.A.C. 14:5-9.6 and amended by R.2015 d.138, effective August 17, 2015.

See: 47 N.J.R. 631(a), 47 N.J.R. 2165(c).

Rewrote the section. Former N.J.A.C. 14:5-9.7, Training, recordkeeping and reporting, recodified to N.J.A.C. 14:5-9.9.

§ 14:5-9.8 Distribution line vegetation management

(a) In addition to the other requirements of this subchapter, distribution lines are subject to the requirements in this section.

(b) Distribution lines shall be inspected and trimmed to maintain the horizontal clearance distance appropriate for the operating voltage and other factors as specified by the EDC's vegetation management standards as required by N.J.A.C. 14:5-9.6.

1. Starting on January 1, 2016, vegetation management practices shall include removal of all overhanging vegetation from the lock out zone on the distribution circuit. For circuits that do not have a protective device, the EDC's engineering department and VM will designate the area referred to as the lock out zone.

2. Mature trees may be exempt from the above requirements at the reasonable discretion of the EDC's VM as it pertains to the lock out zone.

HISTORY:

New Rule, R.2015 d.138, effective August 17, 2015.

See: 47 N.J.R. 631(a), 47 N.J.R. 2165(c).

Former N.J.A.C. 14:5-9.8, Public notice of planned vegetation management activity, recodified to N.J.A.C. 14:5-9.10.

§ 14:5-9.9 Training, recordkeeping, and reporting

(a) Each EDC shall ensure that:

1. Qualified OSHA and ANSI Z133 line clearance employees or contractors perform vegetation management for the EDC;

2. All such employees or contractors are trained in the proper care of trees and other woody plants in order to provide safe, reliable electric service; and

3. All such employees or contractors are knowledgeable regarding safety practices and line clearance techniques.

(b) Each EDC shall ensure that records are kept of all persons used by a contractor or the EDC to perform vegetation management on behalf of the EDC, including the dates and types of training that each such person has received.

(c) The EDC shall monitor and document all vegetation management and related activities. Documentation shall be retained for five years and shall include, but shall not be limited to:

1. The municipality in which the work was performed;
2. Identification of the circuit and substation where vegetation management activities were performed;
3. The type of vegetation management performed including removal, trimming and spraying and methods used;
4. The crew size and supervisor's name;
5. The date of activity;
6. Any safety hazards encountered;
7. Any unexpected occurrence or accident resulting in death, life-threatening or serious injury to a person assigned to perform vegetation management activities or the public; and
8. Vegetation management activities planned for the following year.

(d) Each EDC shall include a summary of the information required in (c) above about its vegetation management work during the past year, and planned activities for the following year in the Annual System Performance Report to be filed with the Board by May 31 of each year. The information provided under this requirement shall include:

1. At a minimum, the name of each municipality in which the EDC conducted vegetation management during the reporting year, and all circuits subject to such vegetation management; and
2. A listing of distribution circuits by municipality indicating the number of hazard trees for which permission to remove was denied.

(e) To track the completion of each vegetation management cycle for inspection and trimming required by this subchapter, each EDC shall include the following tables in the Annual System Performance Report to be filed with the Board by May 31 of each year:

1. A table that includes the following columns:
 - i. Percentage of electric overhead transmission corridor mileage inspected (and trimmed as necessary) for each of the three years prior to the reporting year of the Annual System Performance Report (three columns);

ii. Percentage of electric overhead transmission corridor mileage inspected for the reporting year of the Annual System Performance Report (one column); and

iii. Projected percentage of electric overhead transmission corridor mileage to be inspected for each of the three years following the reporting year of the Annual System Performance Report (three columns); and

2. A table that includes the following columns:

i. Percentage of distribution circuit length inspected (and trimmed as necessary) for each of the three years prior to the reporting year of the Annual System Performance Report (three columns);

ii. Percentage of distribution circuit length inspected (and trimmed as necessary) for the reporting year of the Annual System Performance Report (one column); and

iii. Projected percentage of distribution circuit length to be inspected (and trimmed as necessary) for each of the three years following the reporting year of the Annual System Performance Report (three columns).

HISTORY:

Recodified from N.J.A.C. 14:5-8.7 and amended by R.2008 d.57, effective March 17, 2008.

See: 39 N.J.R. 3716(a), 40 N.J.R. 1684(a).

Substituted "EDC" for "electric public utility" throughout; rewrote (a) and (b); in the introductory paragraph of (c), inserted "be retained for five years and shall"; and in (d), substituted "the Annual System Performance Report" for "an annual report" and "May 31 of" for "May 31st".

Recodified from N.J.A.C. 14:5-9.7 and amended by R.2015 d.138, effective August 17, 2015.

See: 47 N.J.R. 631(a), 47 N.J.R. 2165(c).

Section was "Training, recordkeeping and reporting". Rewrote (d). Former N.J.A.C. 14:5-9.9, Outreach programs, recodified to N.J.A.C. 14:5-9.11.

§ 14:5-9.10 Public notice of planned vegetation management activity

(a) Unless specifically stated elsewhere in this subchapter, each EDC shall make a diligent attempt to notify all municipal governments, customers, and property owners that may be affected by planned vegetation management activity on the EDC's distribution or transmission system. This requirement will be satisfied if the EDC provides written notice to customers and property owners in accordance with (b) and (c) below at least seven days, but not more than 45 days, prior to performing any vegetation management activity; and provides notice to municipal governments in accordance with (f) and (g) below.

(b) For distribution circuits, notice shall be provided to the following customers and property owners by separate direct mailing, door hanger, or any other Board-approved method:

1. All customers upon whose property runs any portion of the right of way or easement that will be maintained; and

2. Any owner of a property that meets both of the following:

- i. The property is not served by the EDC, that is, there is no customer located on the property; and
- ii. The property includes a portion of the right of way or easement that will be maintained.

(c) For transmission circuits, notice shall be provided through both of the following:

1. The EDC shall notify the persons described at (b)1 and 2 above through a direct mailing by certified mail, return receipt requested, or by another Board-approved method; and
2. The EDC shall publish a notice in two newspapers that serve the area, within the timeframe set forth in (a) above.

(d) For the purposes of (c)1 above, the United States Post Office (USPS) receipt of mailing (usually printed on white paper), which the USPS provides upon the mailing of an item certified mail return receipt requested, shall constitute proof of compliance.

(e) Each EDC shall maintain a record of the dates, locations and activities contained in the notices, which were provided to the municipal government under this section, for a period of five years after notices are sent.

(f) For municipal governments, each EDC shall provide written notice of any pending vegetation management activities to a primary contact. For a municipality, the mayor, municipal clerk, or other person or position mutually agreed upon shall be the primary contact. For other government entities and for public authorities, the primary contact shall be selected by mutual agreement between the EDC and the entity or authority.

(g) An EDC shall notify all municipalities and public authorities that may be affected by vegetation management activities. The notice shall be made in writing to the primary contact designated under (f) above, at least two months in advance of the planned vegetation management. This notice shall include the planned dates and locations of the vegetation management. In addition, the notice of vegetation management shall be in a manner sufficient to explain each EDC's procedures and easement rights. The EDC shall provide a telephone number of the vegetation manager to enable questions to be answered.

(h) If any notice required under this section is provided by the EDC through a contractor or agent, the notice shall bear the name and logo of the EDC only, and not of the contractor or agent.

HISTORY:

Recodified from N.J.A.C. 14:5-8.8 and amended by R.2008 d.57, effective March 17, 2008.

See: 39 N.J.R. 3716(a), 40 N.J.R. 1684(a).

Section was "Public notice of planned vegetation management". Substituted "EDC" for "electric public utility" throughout; rewrote (a), added (b) through (d); recodified former (b) through (d) as (e) through (g); rewrote (e); in (f), substituted "For municipal governments, each EDC" for "Each electric public utility or its contractor" and substituted the second occurrence of "EDC" for "electric utility"; in (g), substituted "(f)" for "(c)", "manner sufficient to explain" for "form appropriate to" and "EDC's" for "electric public

utility's", and inserted the last sentence; and added (h).

Recodified from N.J.A.C. 14:5-9.8 and amended by R.2015 d.138, effective August 17, 2015.

See: 47 N.J.R. 631(a), 47 N.J.R. 2165(c).

In (f), substituted "municipal clerk," for "town clerk". Former N.J.A.C. 14:5-9.10, Penalties, recodified to N.J.A.C. 14:5-9.12.

§ 14:5-9.11 Outreach programs

(a) Each EDC shall conduct an annual public education program to inform its customers, as well as the municipalities and public agencies in the EDC's service territory, of the importance of vegetation management, and of the EDC's role and responsibility in managing vegetation near electric lines.

(b) The public education program required under this section shall be implemented by direct mail or another method approved by the Board.

(c) Each EDC shall post its public education materials on its website.

(d) As part of its education program under this section, the EDC shall provide on its website illustrations of typical configurations of transmission lines and easements, as necessary to comply with the requirement in (a) above to inform the public regarding the EDC's responsibilities in performing vegetation management under this subchapter.

HISTORY:

Recodified from N.J.A.C. 14:5-8.9 and amended by R.2008 d.57, effective March 17, 2008.

See: 39 N.J.R. 3716(a), 40 N.J.R. 1684(a).

In (a) and (c), substituted "EDC" for "electric public utility"; in (a), substituted "EDC's" for "electric public utility" twice; and added (d).

Recodified from N.J.A.C. 14:5-9.9 by R.2015 d.138, effective August 17, 2015.

See: 47 N.J.R. 631(a), 47 N.J.R. 2165(c).

§ 14:5-9.12 Penalties

(a) Failure to comply with any provision of this subchapter shall subject the violator to penalties in accordance with the Board's regulatory and statutory authority.

(b) An EDC that violates this subchapter may be subject to monetary penalties for each day the violation occurs. The Board shall notify the EDC of the violation(s) in writing. Upon receipt of the written notice of violation, the EDC shall have five business days to correct the violation(s). Any failure to correct the violation shall subject the EDC to penalties as determined by the Board per day for each violation, calculated from the day such written notice was received by the EDC and up to the maximum penalty permitted by law.

(c) Penalties imposed under this subchapter are in addition to, not a replacement for, other fines and/or

penalties that apply under Federal and State laws and regulations.

(d) In determining the appropriate sanction for a violation of this subchapter, the Board shall consider the following criteria, and any other factors deemed appropriate and material to the electric public utility's failure to comply:

1. The good faith efforts, if any, of the entity charged in attempting to achieve compliance;
2. The gravity of the violation or the failure to comply;
3. The number of past violations by the entity charged, including violations of this subchapter as well as of other standards adopted by the Board;
4. The appropriateness of the penalty to the size of the company charged;
5. Events judged to be beyond the violator's control; and
6. Good faith efforts on the part of the EDC to resolve any violations of the requirements contained in this subchapter.

HISTORY:

Recodified from N.J.A.C. 14:5-8.10 and amended by R.2008 d.57, effective March 17, 2008.

See: 39 N.J.R. 3716(a), 40 N.J.R. 1684(a).

In (a), deleted the last sentence; in (b), substituted the first and fifth occurrences of "EDC" for "electric public utility", substituted the second, third and fourth occurrences of "EDC" for "utility", and substituted "penalties" for "fines" twice; deleted former (c); recodified former (d) and (e) as (c) and (d); in (c), substituted "Penalties" for "Fines and costs"; in (d)4, substituted "penalty" for "sanction or fine" and deleted "and" from the end; in (d)5, substituted "; and" for a period at the end; and added (d)6.

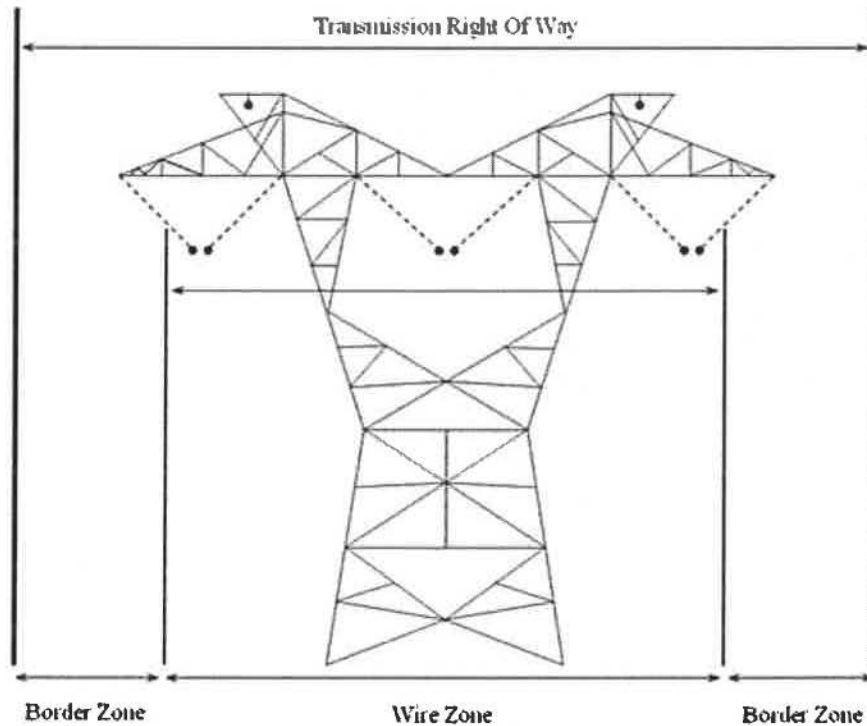
Recodified from N.J.A.C. 14:5-9.10 and amended by R.2015 d.138, effective August 17, 2015.

See: 47 N.J.R. 631(a), 47 N.J.R. 2165(c).

Rewrote (b).

Transmission Right-of-Way Compatible Tree / Shrub List

The following is a list of trees & shrubs that are *generally* compatible within the border zone of the transmission right-of-way; as a rule only woody vegetation with a mature height of 3' or less is allowed in the wire zone. This list is subject to change and accurate only in ideal circumstances. Site specific factors such as conductor height, terrain and corridor width must be taken into account when determining where on the right-of-way and which, *if any*, of the listed species are indeed compatible.



* The wire zone is the area directly under the conductors and extending 15' on each side; the border zone extends from this point out to the edge of the right-of-way.

Arborviate, Emerald Green
Thuja occidentalis 'Emeral Green'
Height 8'-10'

Arborviate, Nigra
Thuja occidentalis 'Nigra'
Height 10'-14'

Butterfly Bush
Buddleia Davidii
Height 4'-5'

Burning Bush, Dwarf
Euonymus alatus 'Compactus'
Height 10'-12'

Cherry, Snow Fountains (Weeping)
Prunus subhirtella 'Snofozam'
Height 8'-12'

Crabapple, Prairifire
Malus 'Prairifire'
Height 15'-20'

Crabapple, Sargent
Malus sargentii
Height 6'-8'

Crabapple, Sugar Tyme
Malus 'Sutyzam'
Height 18'-20'

Dogwood, Kousa Fireworks
Cornus kousa 'Fireworks'
Height 16'-20'

Dogwood, Ottawa Gray
Cornus racemosa 'Ottzam'
Height 10'-12'

Dogwood, Red Twig
Cornus sericea
Height 6'-10'

Dogwood, Silky
Cornus amomum
Height 6'-10'

Forsythia
Forstia X intermedia
Height 3'-6'

Honeysuckle, Freedom
Lonicera x 'Freedom'
Height 6'-9'

Inkberry
Ilex glabra
Height 4'-8'

Lilac, Fragrant
Syringa vulgaris
Height 8'-15'

Lilac, Hungarian
Syringa josikaea
Height 8'-10'

Magnolia, Ann
Magnolia x 'Ann'
Height 8'-10'

Maple, Amur
Acer ginnala 'Flame'
Height 15'-20'

Maple, Laceleaf Japanese
Acer palmatum dissectum
Height 4'-6'

Northern Bayberry, Northern
Myrica pensylvanica
Height 5'-10'

Pear, Trinity Flowering
Pyrus calleryana 'Trinity'
Height 15'-20'

Pear, Korean Sun
Pyrus fauriei 'Westwood'
Height 15'-20'

Plum, Newport Purpleleaf
Prunus cerasifera 'Newport'
Height 15'-20'

Redbud, American
Cercis Canadensis
Height 15'-20'

Rhododendrons
Rhododendrons periclymenoides
Height 4'-6'

Rose of Sharon Hibiscus
syriacus
Height 8'-10'

Sandcherry, Purple Leaf
Prunus x cistena
Height 6'-8'

Serviceberry, Spring Glory
Amelanchier canadensis 'Sprizam'
Height: 10'-15'

Viburnum, Korenspice
Viburnum carlesii
Height 5'-6'

Viburnum, Mapleleaf
Viburnum acerifolium
Height 3'-6'

Winterberry
Ilex verticillata
Height 6'-10'

Yew, Nana
Taxus Cuspidata 'Nana'
Height 10'-15'

COMPATIBLE SPECIES LIST

Contact Utility Vegetation Management Personnel for Consent prior to planting***

This is a list of species of trees and shrubs that are generally acceptable for planting in the vicinity of transmission lines because of their growth rates and typical peak heights. *Please note that there is a large variety of compatible trees in addition to the examples below, as you need to contact a Vegetation Management team member prior to planting for consent*

Small trees – Border Zone Only: Depending on Topography

- Flowering Dogwood (Cornus florida)
- Hawthorn (Crataegus spp.)
- Blue Beech (American Hornbearn) (Carpinus carolina)
- Shadbush (Juneberry, Serviceberry) (Amelanchier spp.)
- Deciduous Holly (Winterberry) (Ilex verticillata)

Large shrubs – Border Zone Only: Depending on Topography

- Alder (Alnus spp.)
- Witch-hazel (Hamamelis virginiana)
- Spicebush (Lindera benzoin)
- Common Chokecherry (Prunus virginiana)
- Elderberry (Sambucus spp.)
- Rhododendron (Rhododendron maximum)
- Virburnum (Viburnum spp.)
- Chokeberry (Pyrus arbutifolia)
- Dwarf arborvitae
- Small Lilacs (spp.)
- Forsythia
- American Yew-Ground Hemlock (Taxus Canadensis)
- Blackberry (Rubus allegheniensis)

Small Shrubs – Border Zone/Wire Zone: Depending on Topography

- Mountain Laurel (Kalmia latifolia)
- Sweetfern (Comptonia peregrina)
- Honeysuckle (Lonicera spp.)
- Huckleberries (Gaylussacia spp.)
- Blueberries (Vaccinium spp.)
- Viburnums (Viburnum spp.)
- Meadowsweet (Spirea spp.)
- Wintergreen (Gaultheria procumbens)
- Trailing Arbutus (Epigaea repens)
- Raspberry (Rubus occidentalis)
- Hydrangea
- Azalea

All native grasses, ferns and herbaceous plants.



PSE&G PHONE NUMBER REFERENCE

Vegetation Management Inquiry Line	732-289-5292
Customer Service/Account Inquiry	800-436-7734
Credit & Collection	800-357-2262
Appliance Repair Service/ Worry free Contract	800-350-7734
Gas Leak Emergency	800-880-7734
Energy Deregulation	800-706-7734
Energy Conservation Info	800-854-4444
Cool Customer (A/C Cycling)	800-626-2062
Call Before You Dig	800-272-1000
Claims	800-252-4688
Home Energy Assistance Program (HEAP)	800-510-3102
Revenue Integrity/Energy Diversion (theft)	800-882-0145