

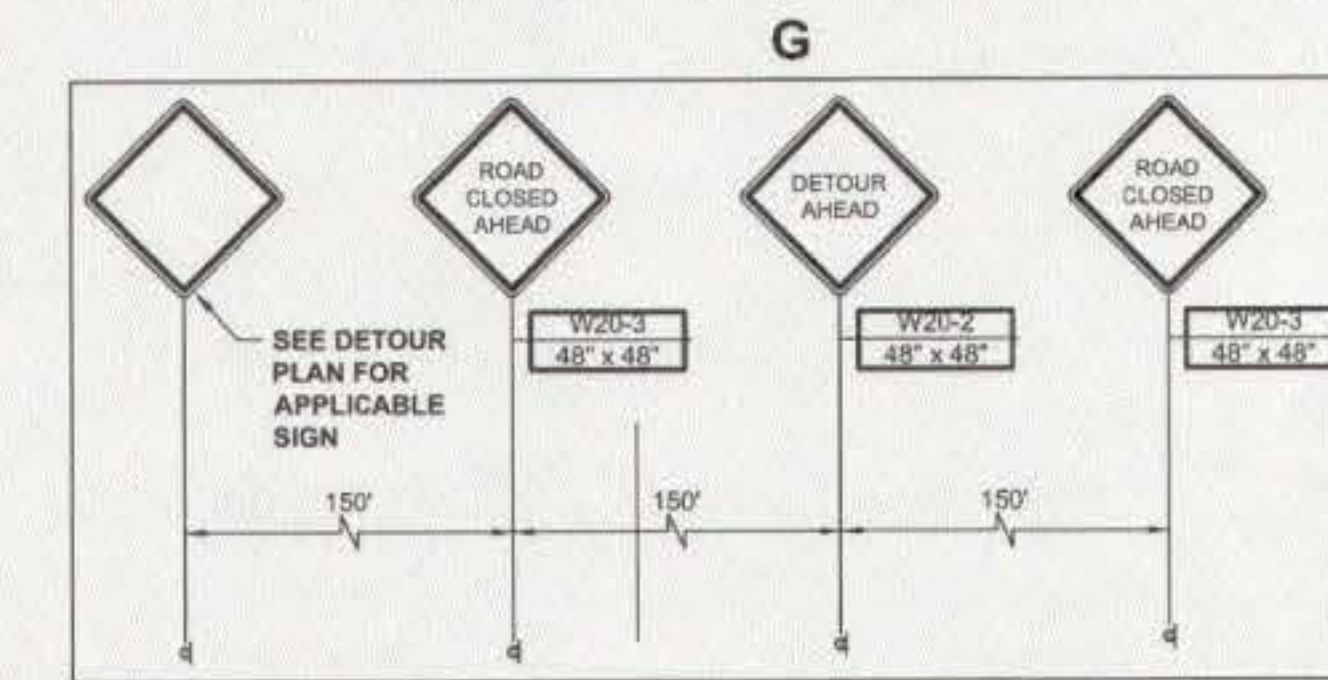
E:\SCE\ Lambertville\10130 Sewer Rehabilitation\Sheets\10130.021 07-10 Traffic Detour Plans.dwg Fri, Mar 29, 2019 - 2:10pm JFowler SUBURBAN CONSULTING ENGINEERS, INC.



SWAN STREET TRAFFIC DETOUR PLAN I
SCALE: 1" = 80'

SIGN LEGEND

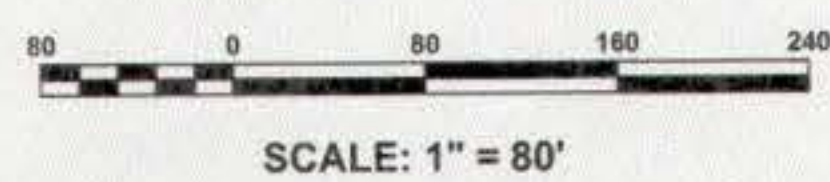
A	B	C	D
DETOUR M4-8 30" X 15" BLK/ORG	DETOUR M4-8 30" X 15" BLK/ORG	DETOUR M4-8 30" X 15" BLK/ORG	DETOUR M4-8 30" X 15" BLK/ORG
WEST M3-1 36" X 18" BLK/WHITE	WEST M3-1 36" X 18" BLK/WHITE	WEST M3-1 36" X 18" BLK/WHITE	WEST M3-1 36" X 18" BLK/WHITE
→ M6-1(R) 21" X 15" BLK/ORG	← M6-1(L) 21" X 15" BLK/ORG	↑ M6-3 21" X 15" BLK/ORG	END DETOUR M4-8a 21" X 15" BLK/ORG
		E R11-3 60"x30" ROAD CLOSED	F R11-3 60"x30" ROAD CLOSED LOCAL TRAFFIC ONLY



TRAFFIC CONTROL LEGEND

- POST WITH MOUNTED SIGN
- TYPE III BREAKAWAY BARRICADE WITH SIGN
- TRAFFIC DRUMS
- WORK ZONE
- WEST BOUND SWAN STREET TRAFFIC DETOUR
- DIRECTION OF ONE-WAY TRAFFIC

NOTE:
1. ALL INSTALLATION PROCEDURES FOR TRAFFIC CONTROL SHALL CONFORM WITH ANY AND ALL NJDOT REQUIREMENTS AND COUNTY REQUIREMENTS.
2. NJDOT APPROVED MOUNTED LIGHTS SHALL BE MOUNTED ON THE SIGNS DURING NIGHT WORK.



NOTICE
THIS DRAWING AND ALL INFORMATION CONTAINED HEREIN IS AUTHORIZED FOR USE ONLY BY THE PARTY FOR WHOM THE WORK WAS CONTRACTED OR TO WHOM IT IS CERTIFIED. THIS DRAWING MAY NOT BE COPIED, REPRODUCED, DISTRIBUTED, OR USED FOR ANY OTHER PURPOSE WITHOUT THE WRITTEN CONSENT OF SUBURBAN CONSULTING ENGINEERS, INC. FOR E.C.G. ELECTRONIC SUBMISSIONS NOT CONTAINING A VALID DIGITAL SEAL OR PAPER COPIES NOT CONTAINING A RAISED SEAL ARE NOT ORIGINALS AND MAY HAVE BEEN ALTERED.
© COPYRIGHT 2018 SUBURBAN CONSULTING ENGINEERS, INC. ALL RIGHTS RESERVED.

DESCRIPTION	NO.	DATE	BY	CHK
REVISIONS				

DRAWN BY:
JMF
03/29/2019
CHECKED BY:
MKM
03/29/2019
CHECKED BY:

ANDREW S. HOLT, PE
NJ PROFESSIONAL ENGINEER
LICENSE NO. 24690385400

DATE: 03/29/2019

SC SUBURBAN CONSULTING ENGINEERS, INC.
COA NO. 20140000300
Civil Engineers - Municipal Engineers
Landscape Architects
Planners - Transportation - Land Surveyors
96 US Highway 206, Suite 101 2450 Highway 34, 1046 A, Suite 1R
Flinders, N.J. 07836 - 973.396.1776 Wall, N.J. 08736 - 732.262.1776
EXCELLENCE • ECONOMY • ENVIRONMENT

LAMBERTVILLE MUNICIPAL UTILITIES AUTHORITY
2019 SANITARY SEWER COLLECTION SYSTEM REHABILITATION
CITY OF LAMBERTVILLE, COUNTY OF HUNTERDON,
STATE OF NEW JERSEY
SWAN STREET TRAFFIC DETOUR PLAN I

PROJECT NUMBER:
SCE-10130.021
SCALE:
1" = 80'
SHEET 9 OF 12
REVISION